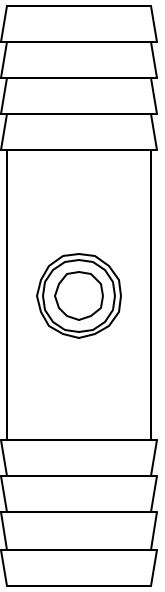
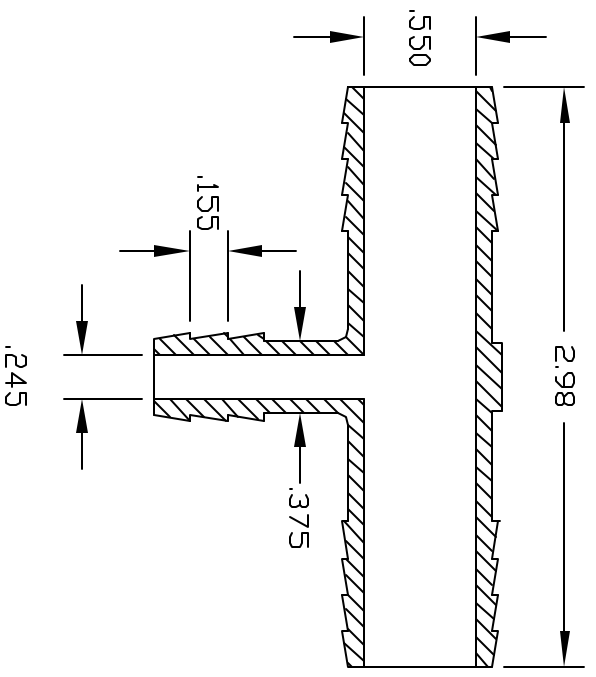
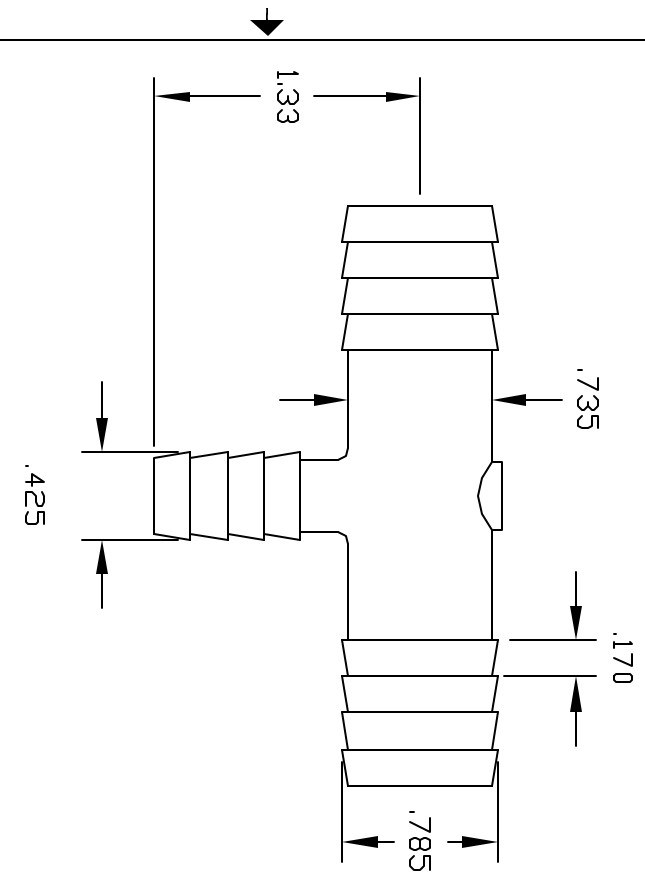


REVISIONS			
REV	DESCRIPTION	DATE	APPROVED
A	REDRAWN & RELEASED	4/98	4/98
B	MODIFY GATE PAD	2/07	2/07
C	UPDATE DWG	9/07	9/07



CONTROLLED DOCUMENT  
ONLY IF IN RED

**CONFIDENTIAL**  
THIS PRINT AND THE SPECIFICATIONS ARE THE PROPERTY OF THOGUS PRODUCTS COMPANY AND HAVE BEEN ISSUED WITH THE UNDERSTANDING THAT REVEALING THE IDENTIFIED INFORMATION TO ANY OTHER MANUFACTURER FOR OTHERS AND WILL BE RETURNED UPON REQUEST.

UNLESS OTHERWISE SPECIFIED DIMENSIONS ARE IN INCHES		TOLERANCES	
XX	+/- .015	XX	+/- .015
XXX	+/- .015		
DRAWN	NM	DATE	4/98
DESIGNED	961212P		
MATERIAL	POLYETHYLENE		
Part Name	3/8 BARB X 3/4 BARB X 3/4 BARB TEE	Part Number	TT961212/P
THOGUS PRODUCTS		33490 PIN DAK PARKWAY AVON LAKE OHIO 44012	
		SHEET	1 of 1
		REV	C