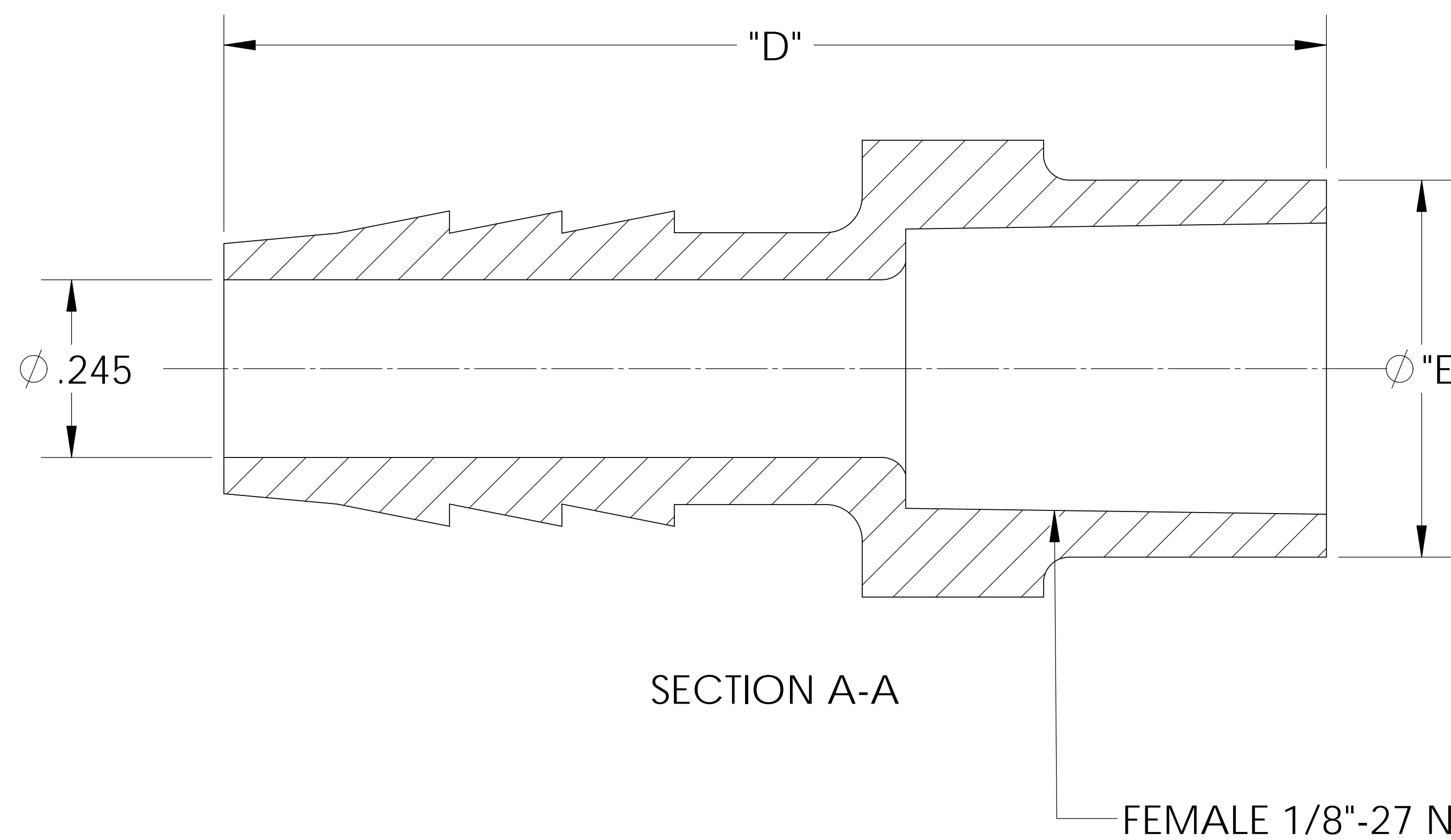
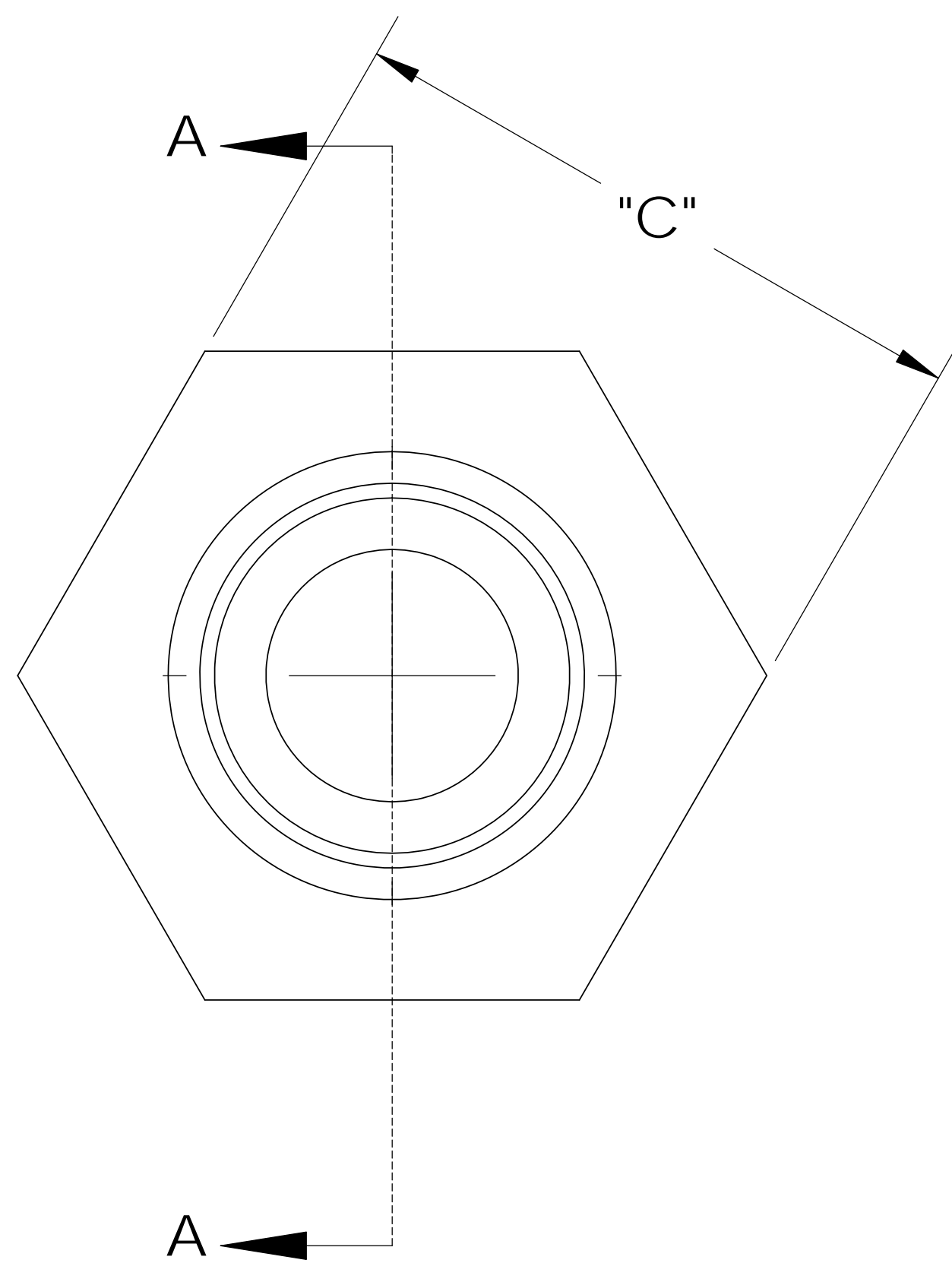
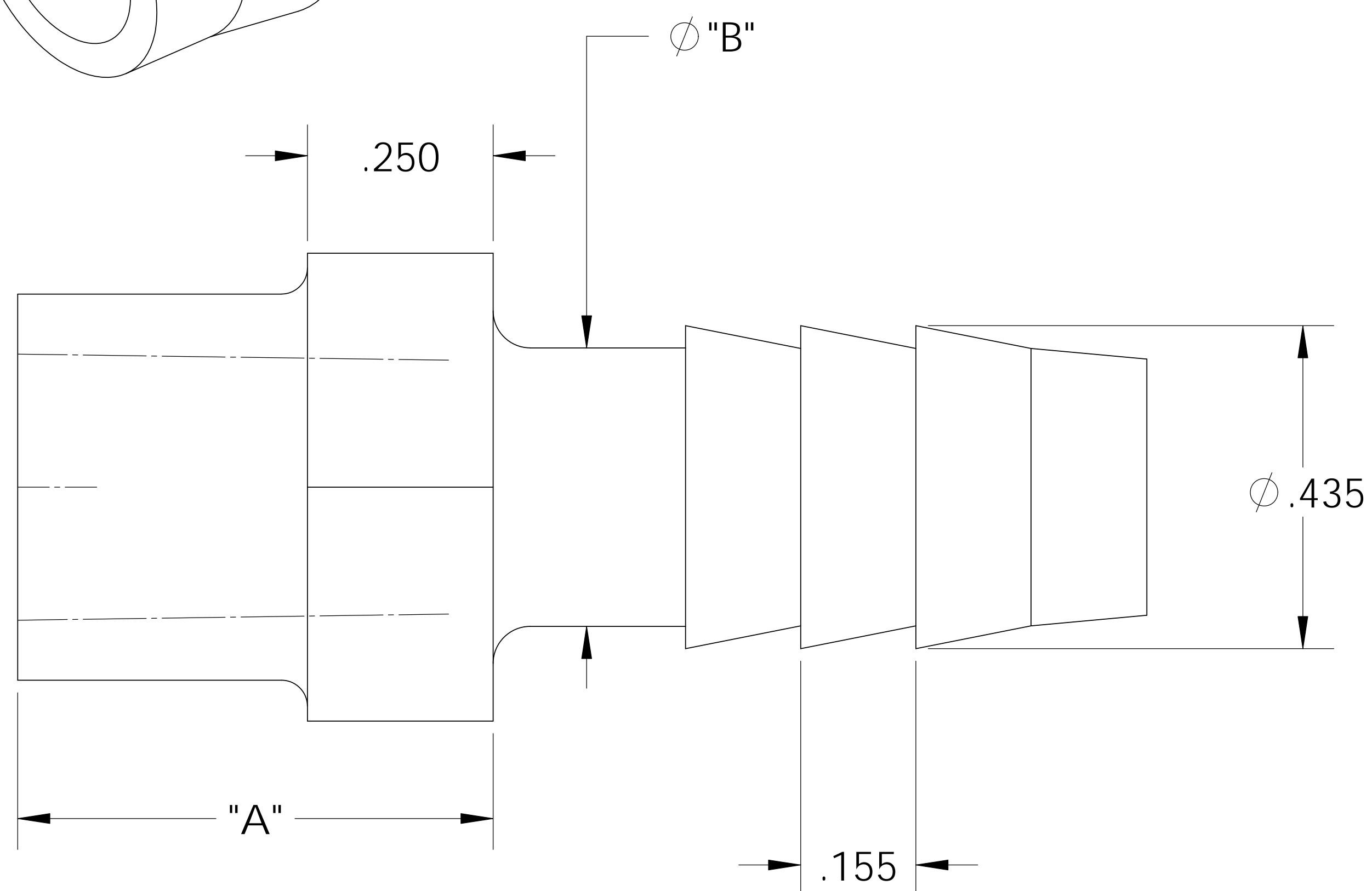
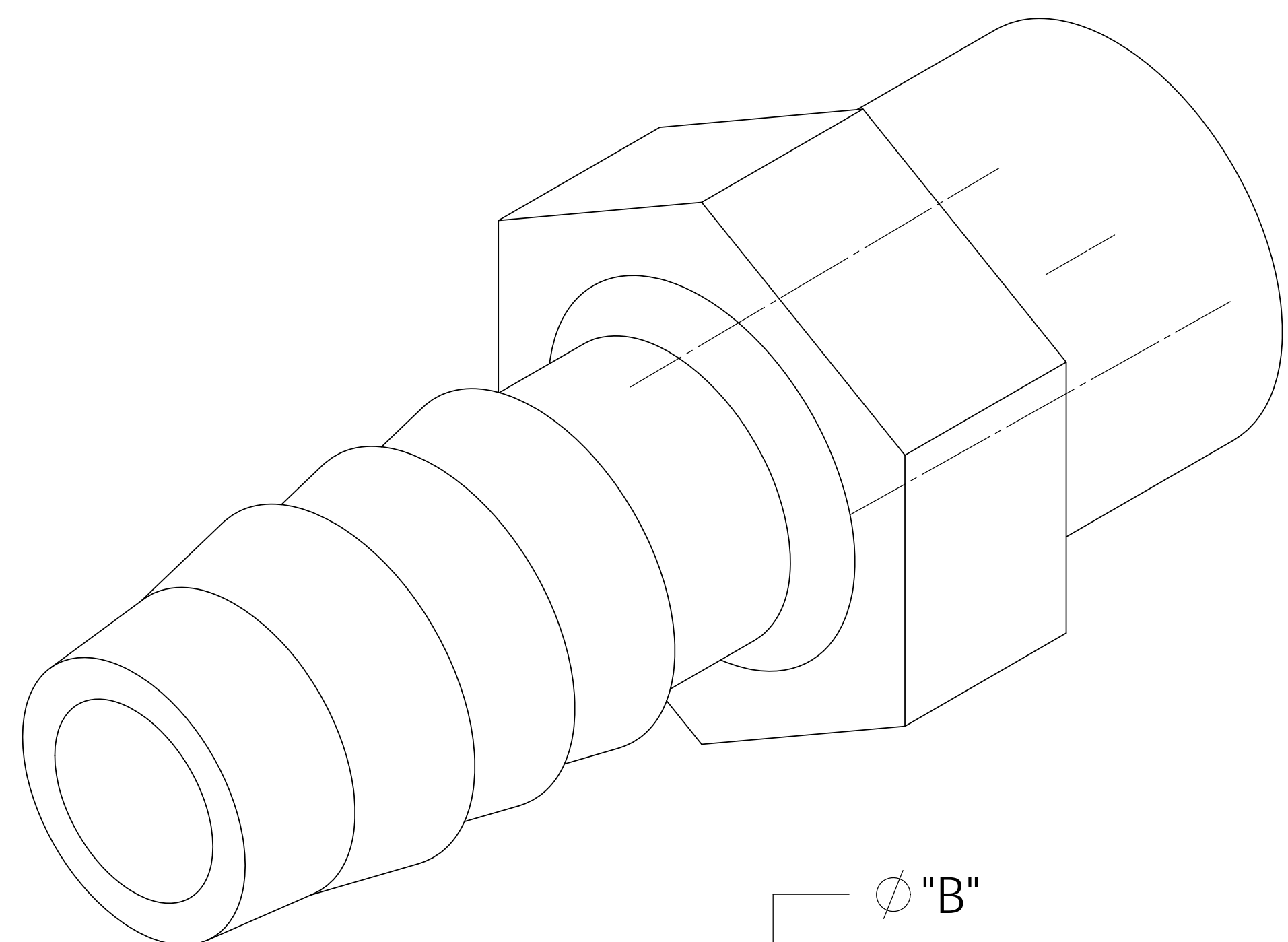


UNCONTROLLED IF PRINTED; CONTROLLED DOCUMENT LOCATED IN IQMS DOCUMENT CONTROL



NOTES:

- 1) POLYPROPYLENE HAS COLOR OPTIONS:  
 BLACK = TAF1026/PPB  
 NATURAL = TAF1026/PPN

**PROPRIETARY AND CONFIDENTIAL**  
 THE INFORMATION CONTAINED IN THIS DRAWING IS THE SOLE PROPERTY OF THOGUS PRODUCTS COMPANY. ANY REPRODUCTION IN PART OR AS A WHOLE WITHOUT THE WRITTEN PERMISSION OF THOGUS PRODUCTS COMPANY IS PROHIBITED.

CATALOG NO.	DESCRIPTION	MATERIAL	DIM "A"	DIM "B"	DIM "C"	DIM "D"	DIM "E"
TAF1026/PP	1/8" NPT X 3/8" PP	POLYPROPYLENE	.630	.365	.62	1.50	.515
SHOWN TAF1026/N	1/8" NPT X 3/8" N	NYLON	.640	.375	.63	1.52	.520

REV	WRO#	DESCRIPTION	HISTORY	UNLESS OTHERWISE SPECIFIED:		NAME	DATE	 33490 PIN OAK, AVON LAKE, OH 44012 TITLE: 1/8" NPT FEMALE X 3/8" BARB ADAPTER		
				DIMENSIONS ARE IN INCHES		DRAWN	JRM		05/24/11	
				TOLERANCES:		CHECKED	KDJ		05/24/11	
				ANGULAR: ±0.5° X.X = ± 0.1 X.XX = ± 0.05 X.XXX = ± 0.015 REMOVE ALL SHARP EDGES AND BURRS BLEND ALL RADII TO 0.01IN INTERPRET GEOMETRIC TOLERANCING PER: ANSI Y 14.5 1994 MATERIAL: PP, N FINISH: NA		ENG APPR.			XX/XX/XX	
		MFG APPR.		XX/XX/XX						
		Q.A.		XX/XX/XX	COMMENTS:		SIZE	DWG. NO.	REV	
				THIRD ANGLE PROJECTION:		DO NOT SCALE DRAWING		<b>B</b>	TAF1026	<b>C</b>
						SCALE: 3:1		MASS:	SHEET 1 OF 1	